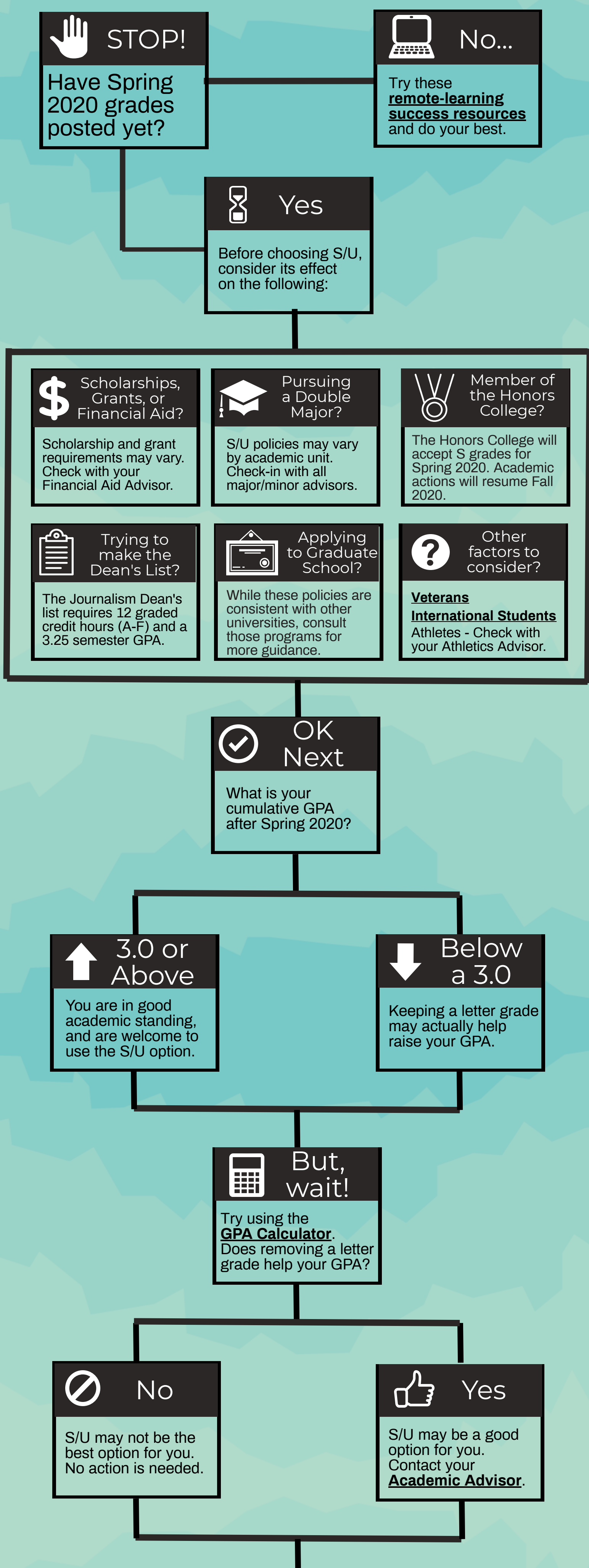


# S/U... Is it for you?

We've been getting a lot of questions about the S/U (Satisfactory/Unsatisfactory) grading option, but there are a number of factors to consider before you know if it's right for you.

After final grades have posted, students can choose to keep a letter grade or select S/U for each course.

This guide can help you decide.



## Other S/U Basics & FAQ

### Satisfactory/Unsatisfactory (S/U) Basics

- S/U grades are NOT included in semester or cumulative GPA calculations
- Any grade C- or higher becomes an "S"
- Any grade D+ or lower becomes a "U"
- "S" receives credit hours toward graduation
- "U" does not receive credit

### What happens when I choose S/U grading?

- The course instructor submits the usual letter grade (A-/+, B-/+, etc.) at the end of the semester.
- Once the course letter grade has been submitted and the student chooses the S/U option, the grade will be converted to S/U in myZou.

### Are there courses required for Journalism I can't choose S/U for?

- No. Journalism courses require a letter grade of C- or higher, equal to the "S" grade.

### When will the S/U grading option be available?

- Students will have from Monday, May 18, 2020 at 8:00 AM until June 5, 2020, at 5 PM (CDT), to complete the request for the change in the grading option.

For more information about S/U, click [here](#).